

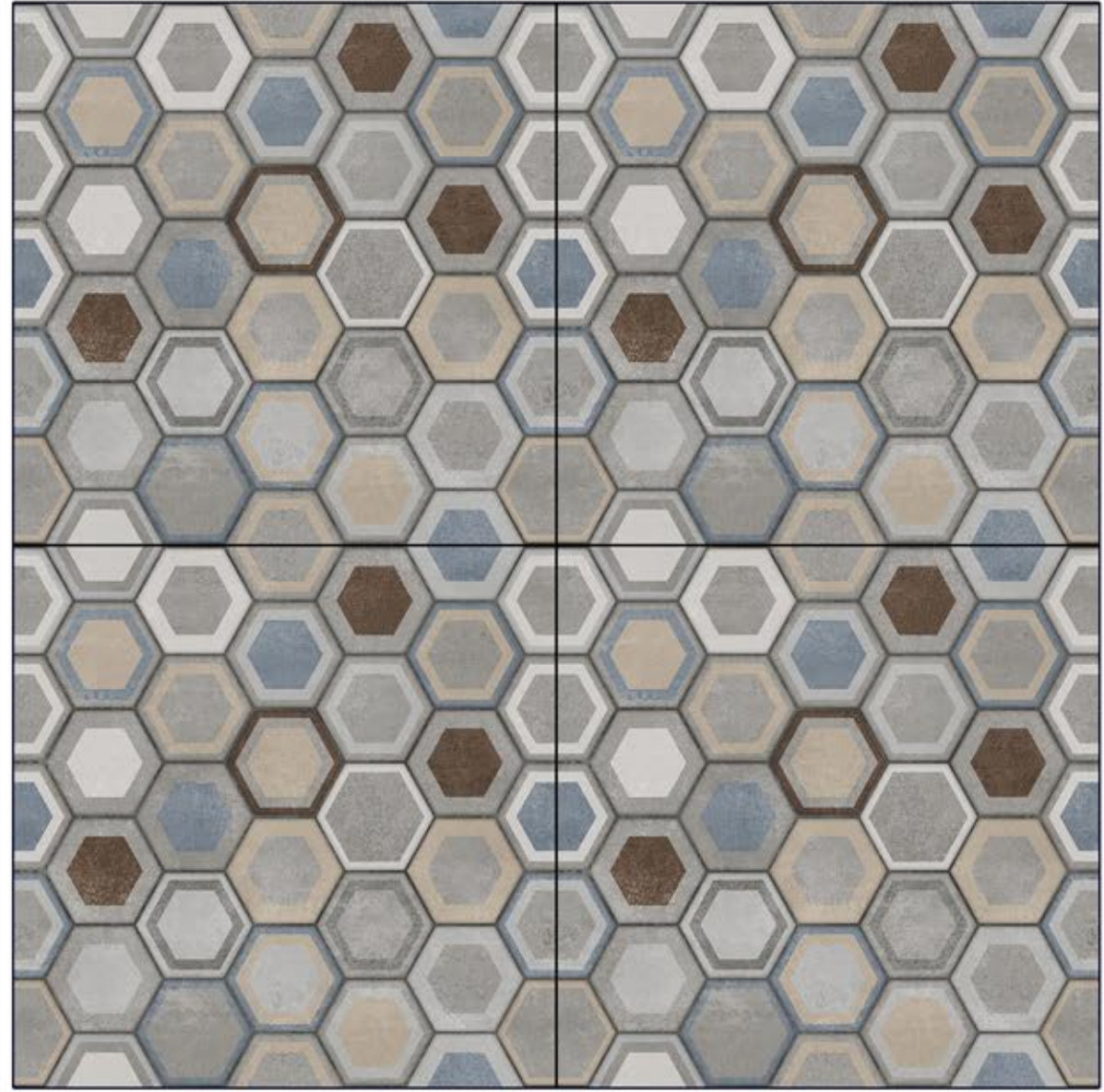
**40X40cm**  
PARKING  
Vitrified Body



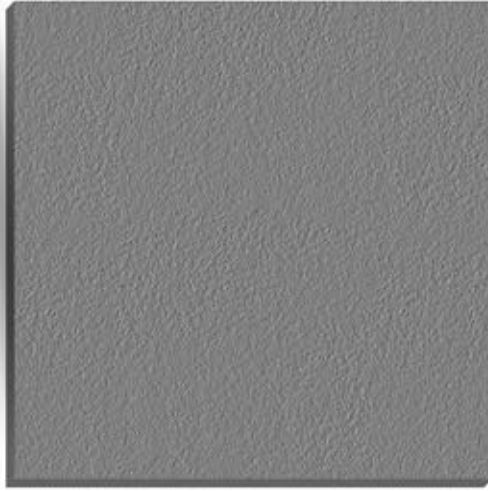
**PLAIN PUNCH**



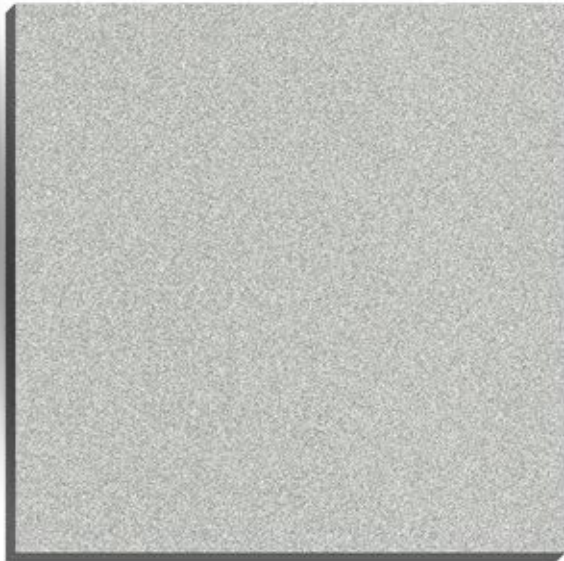
**7056**



**PLAIN FINISH**



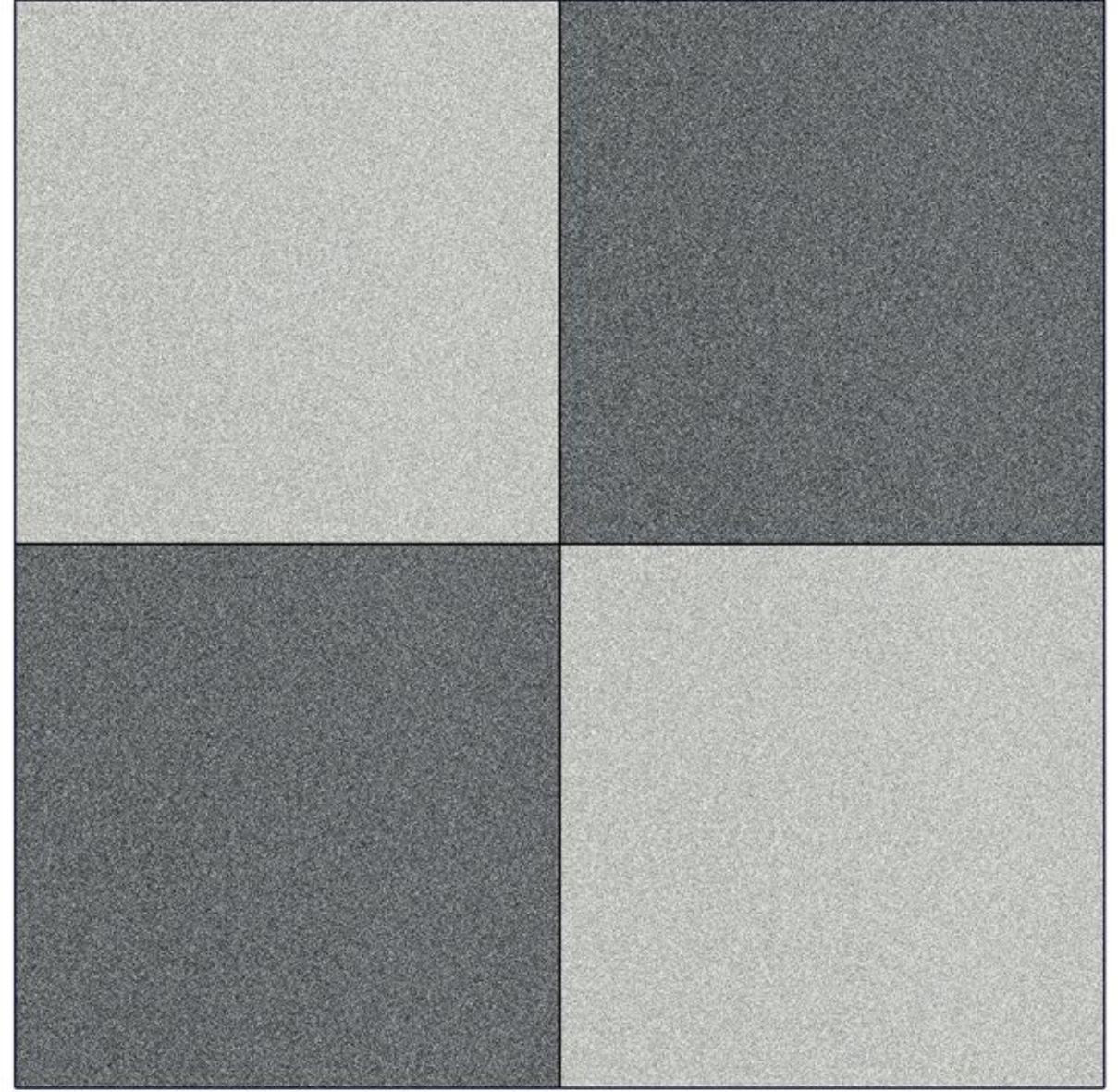
**P2 PUNCH**



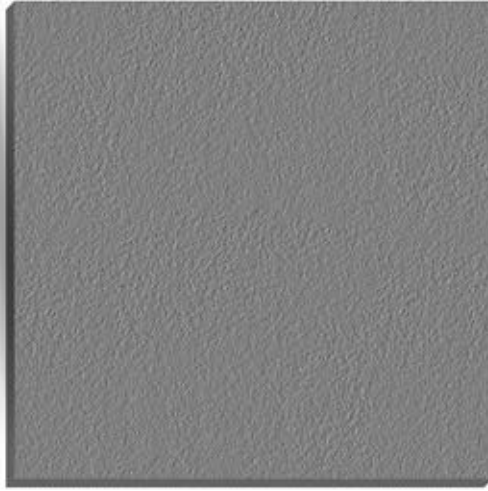
**7101**



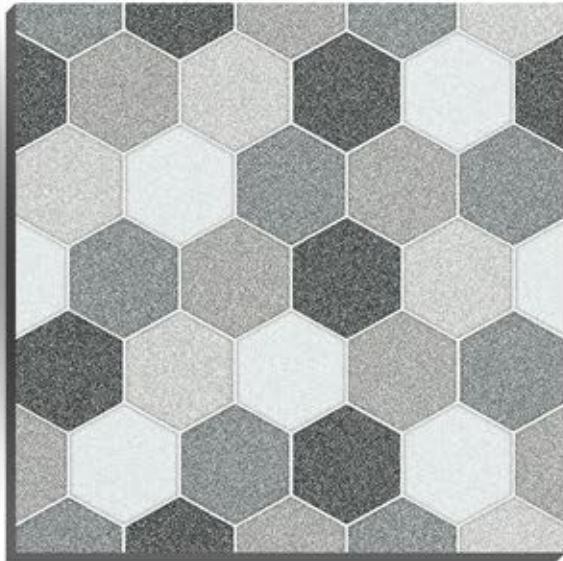
**7102**



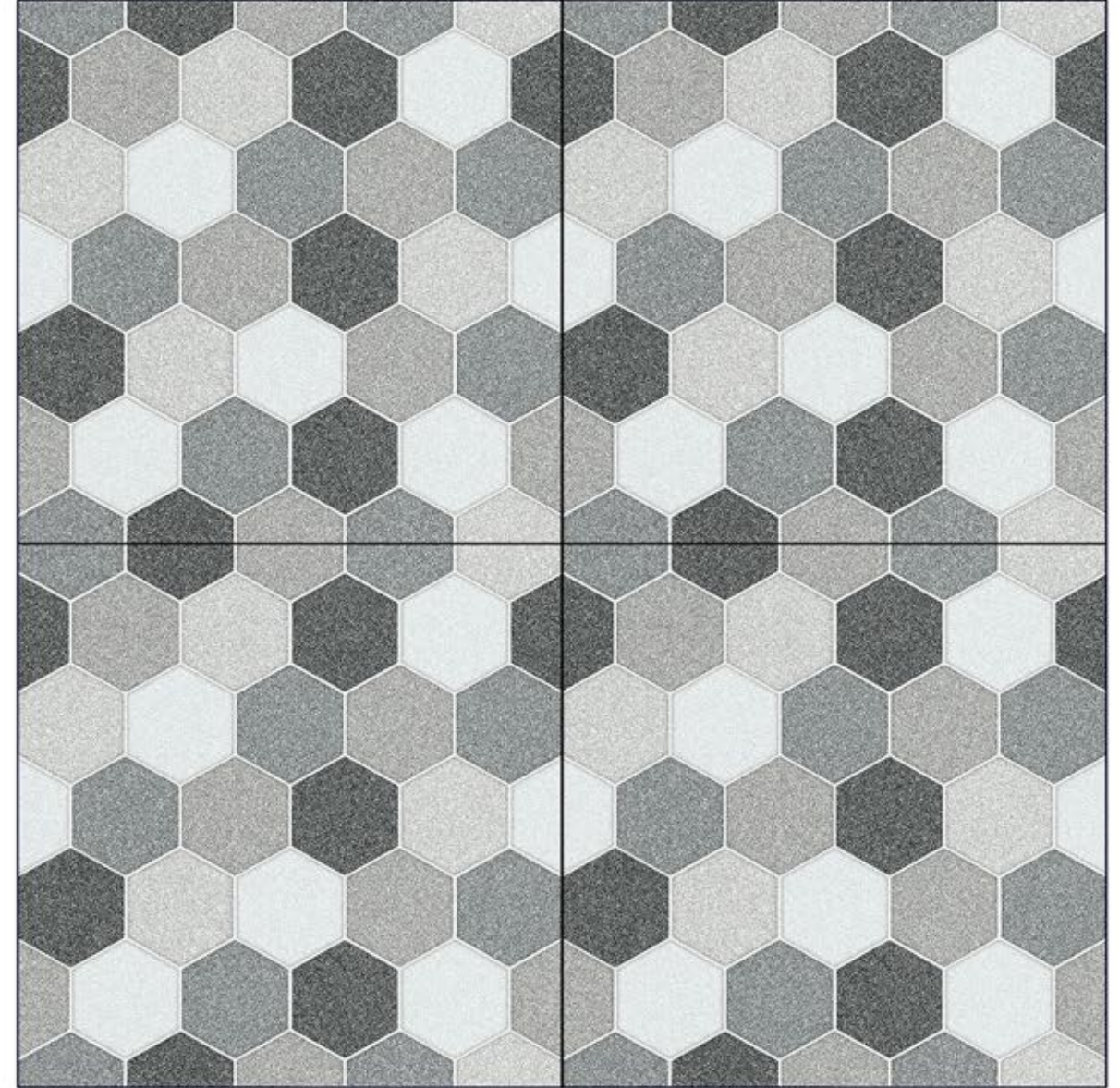
**PUNCH FINISH**



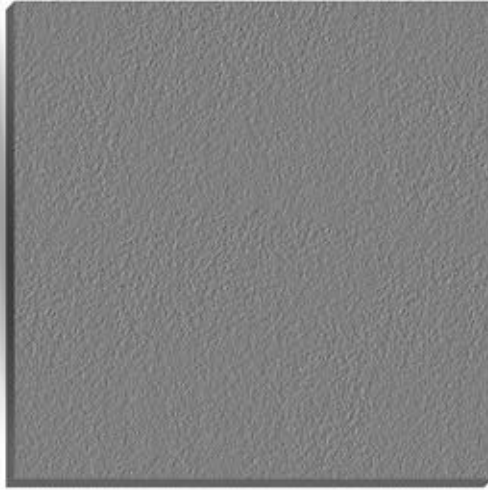
**P2 PUNCH**



**7103**



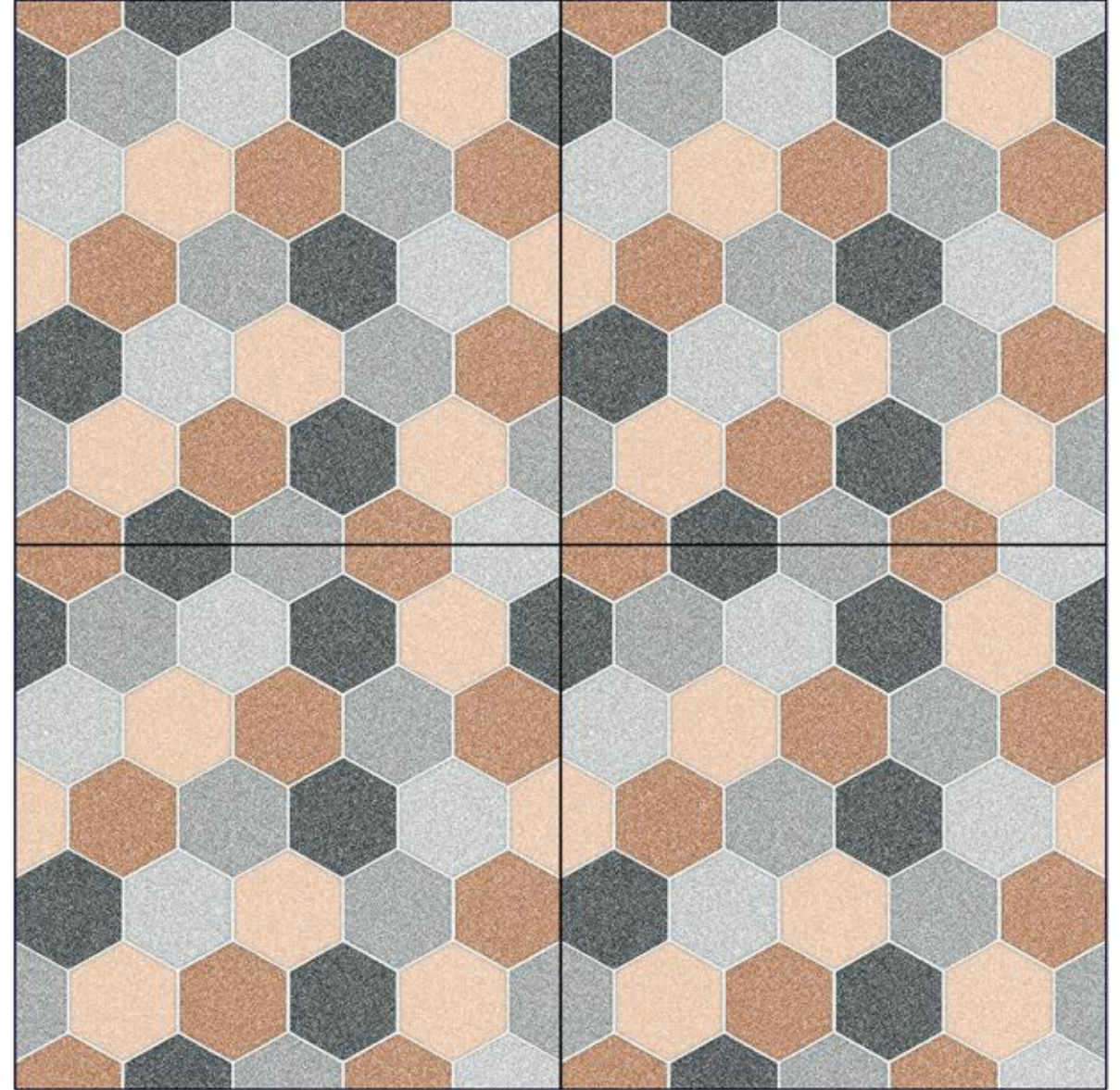
**PUNCH FINISH**



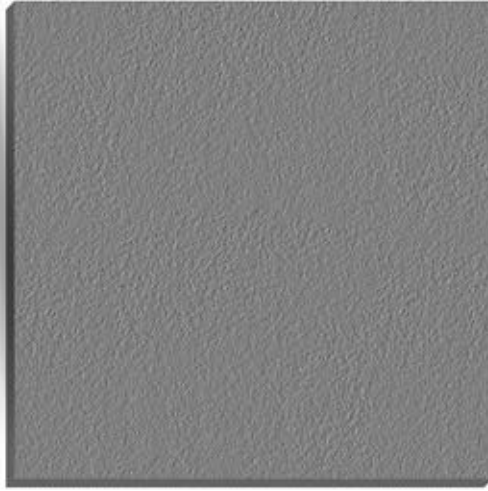
**P2 PUNCH**



**7118**



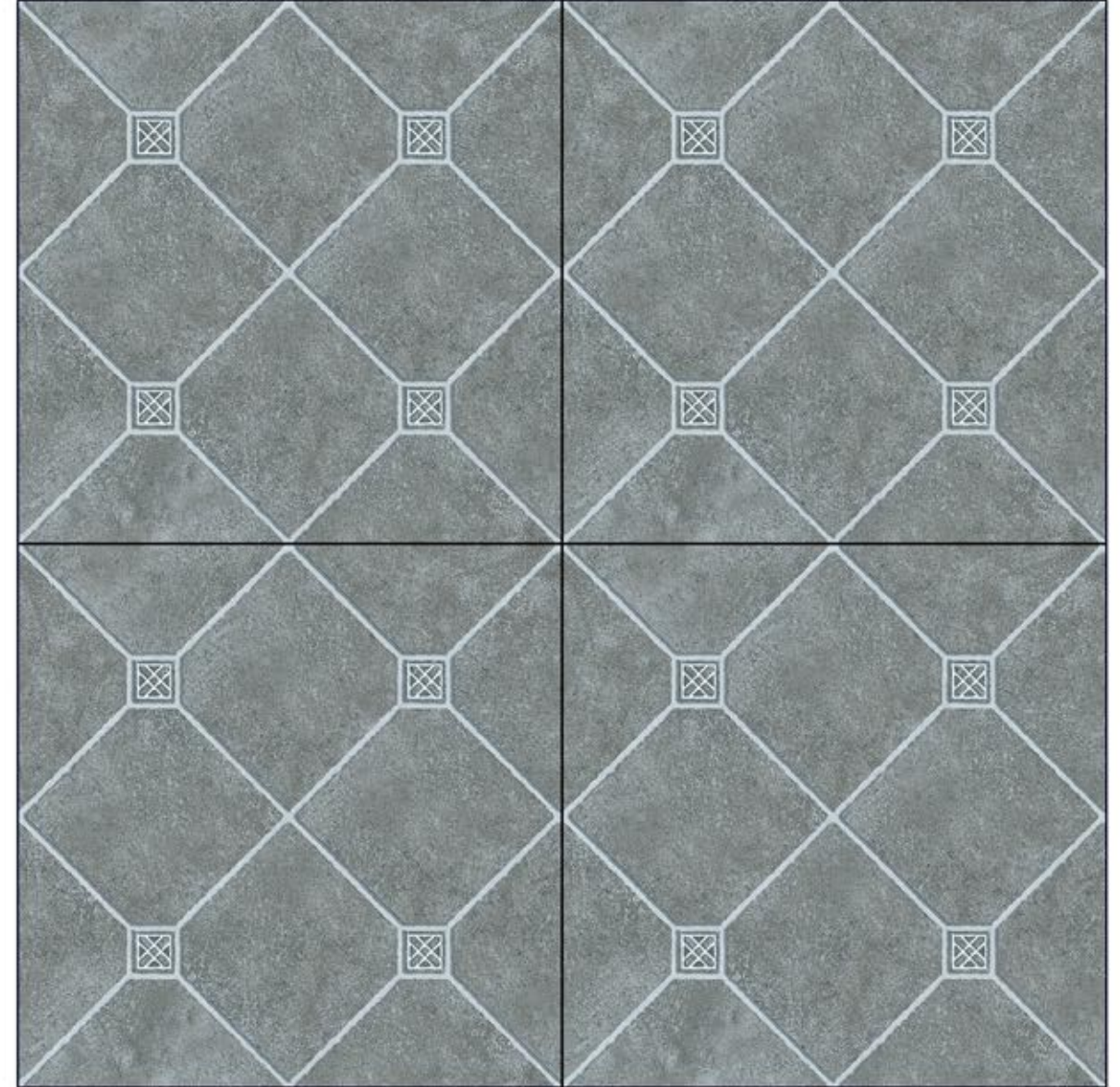
**PUNCH FINISH**



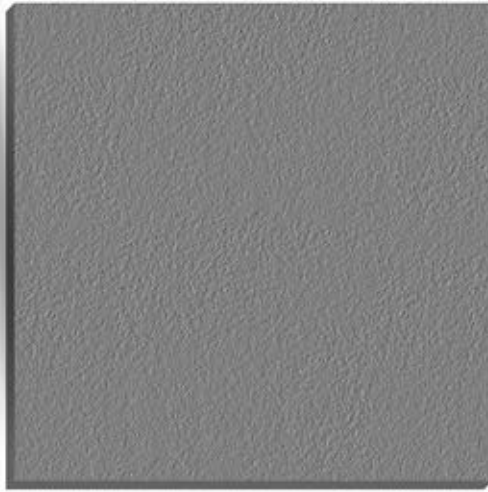
**P2 PUNCH**



**7121**



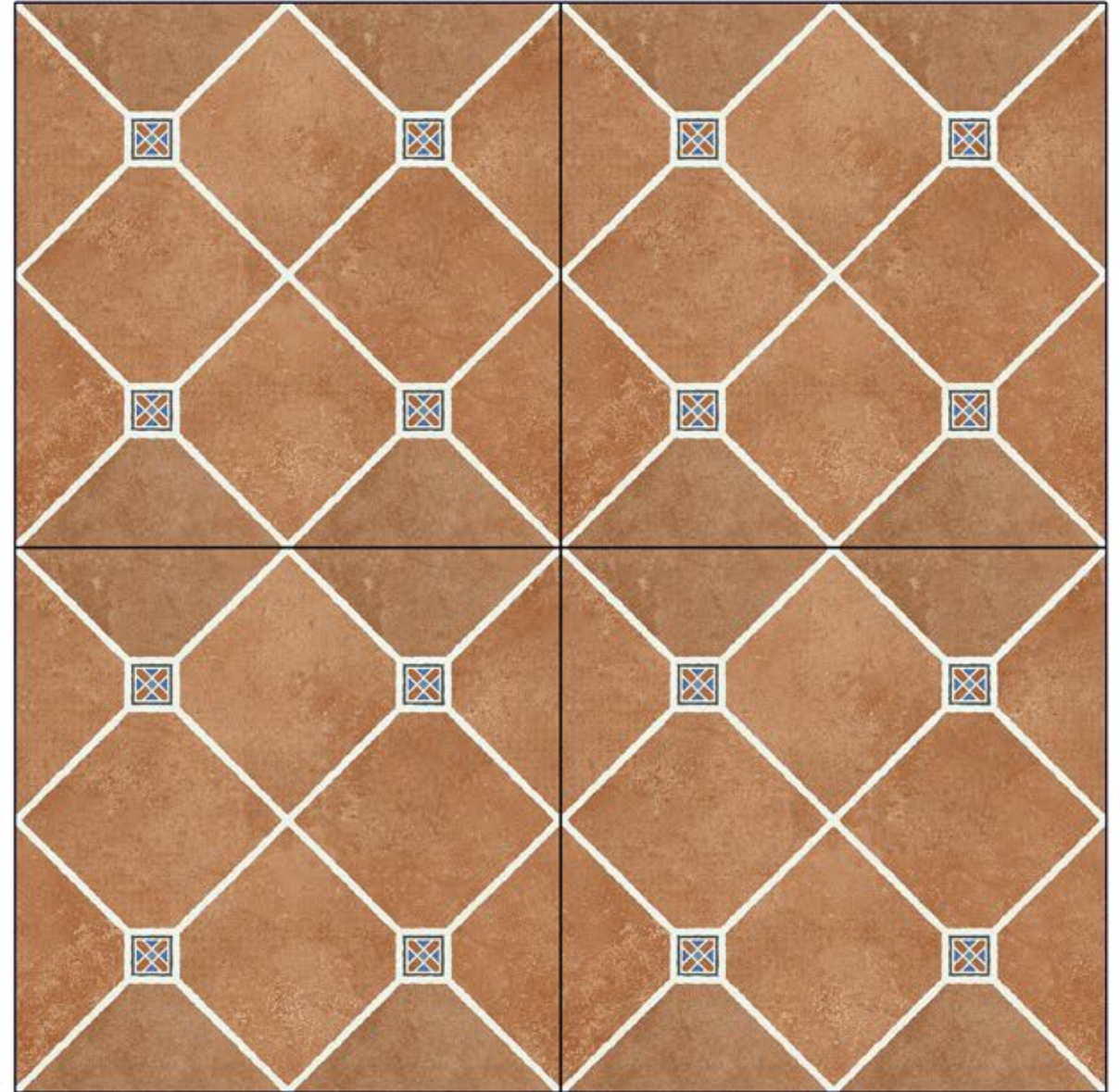
**PUNCH FINISH**



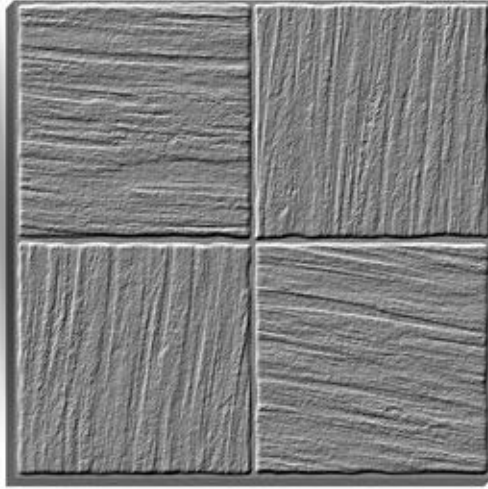
**P2 PUNCH**



**7129**



**PUNCH FINISH**



**P4 PUNCH**

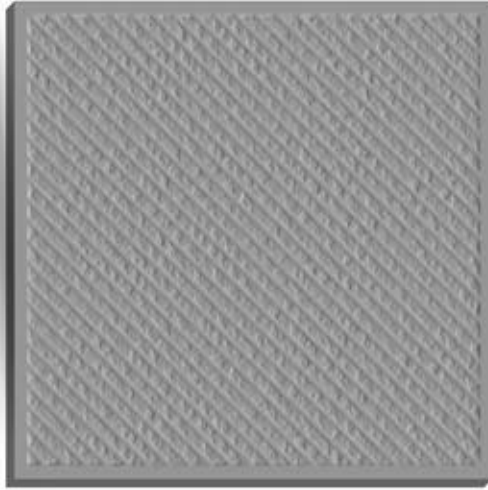


**7178**



**PUNCH FINISH**

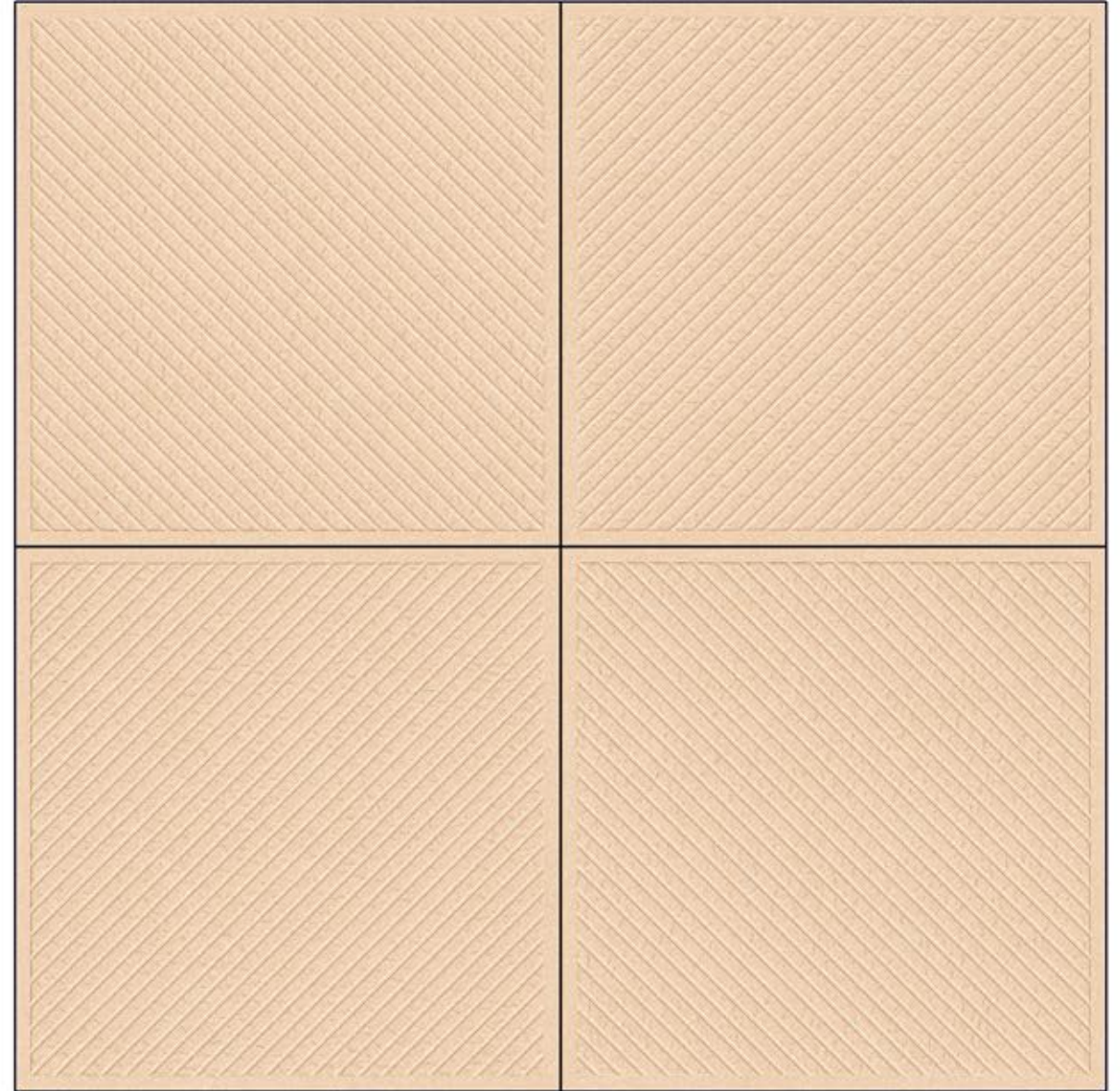




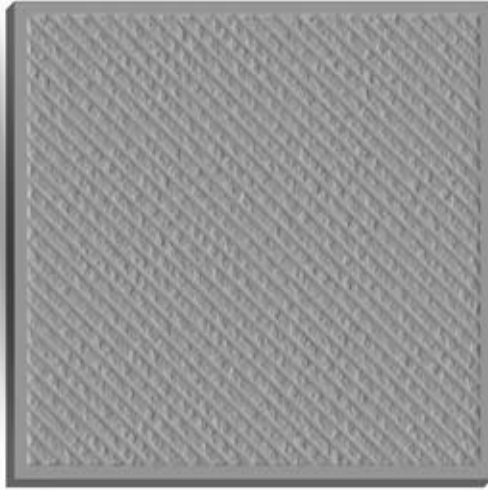
**P5 PUNCH**



**7201**



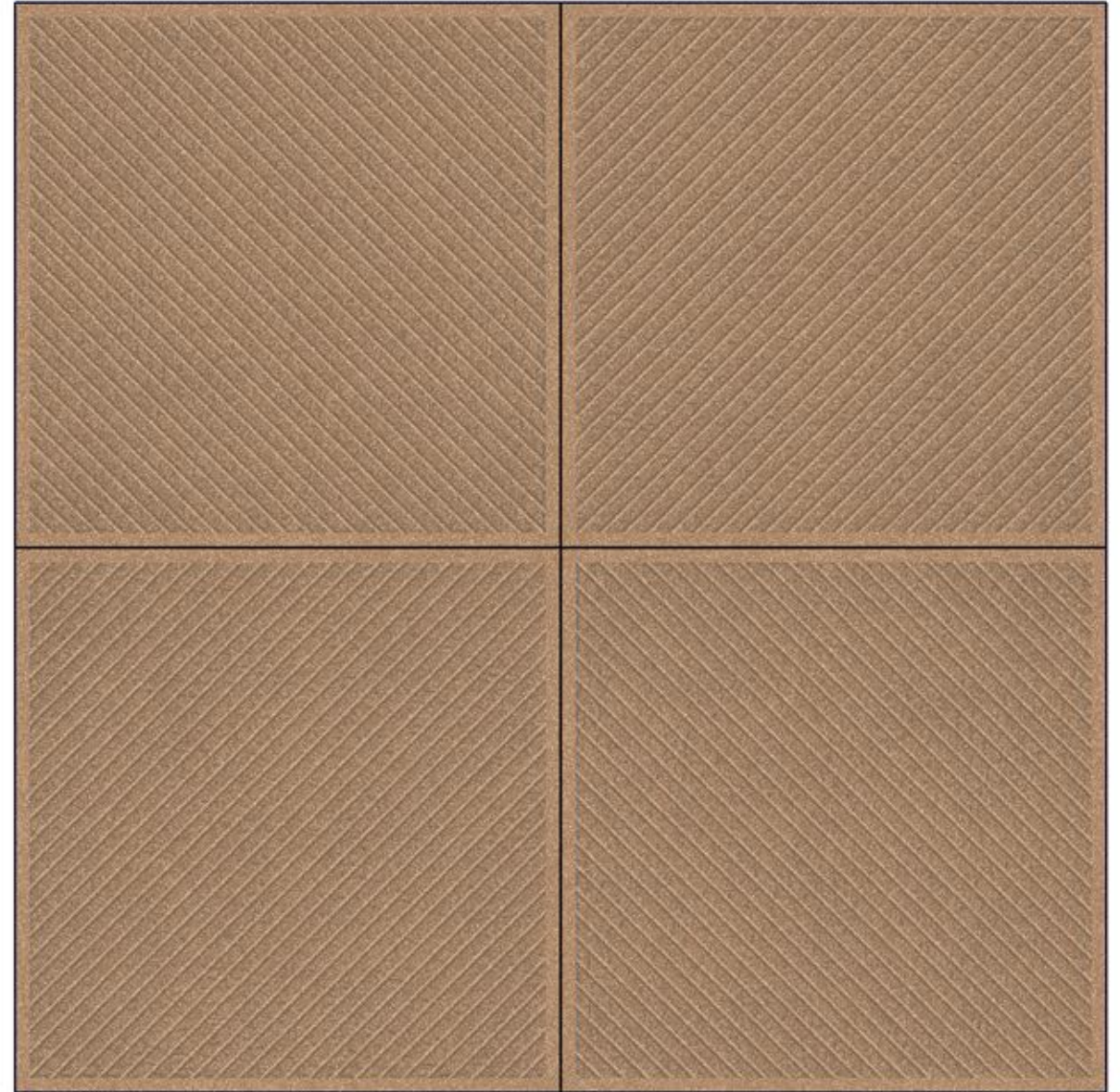
**PUNCH FINISH**



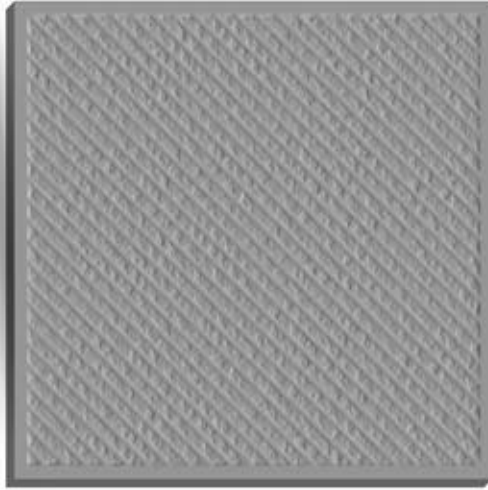
**P5 PUNCH**



**7202**



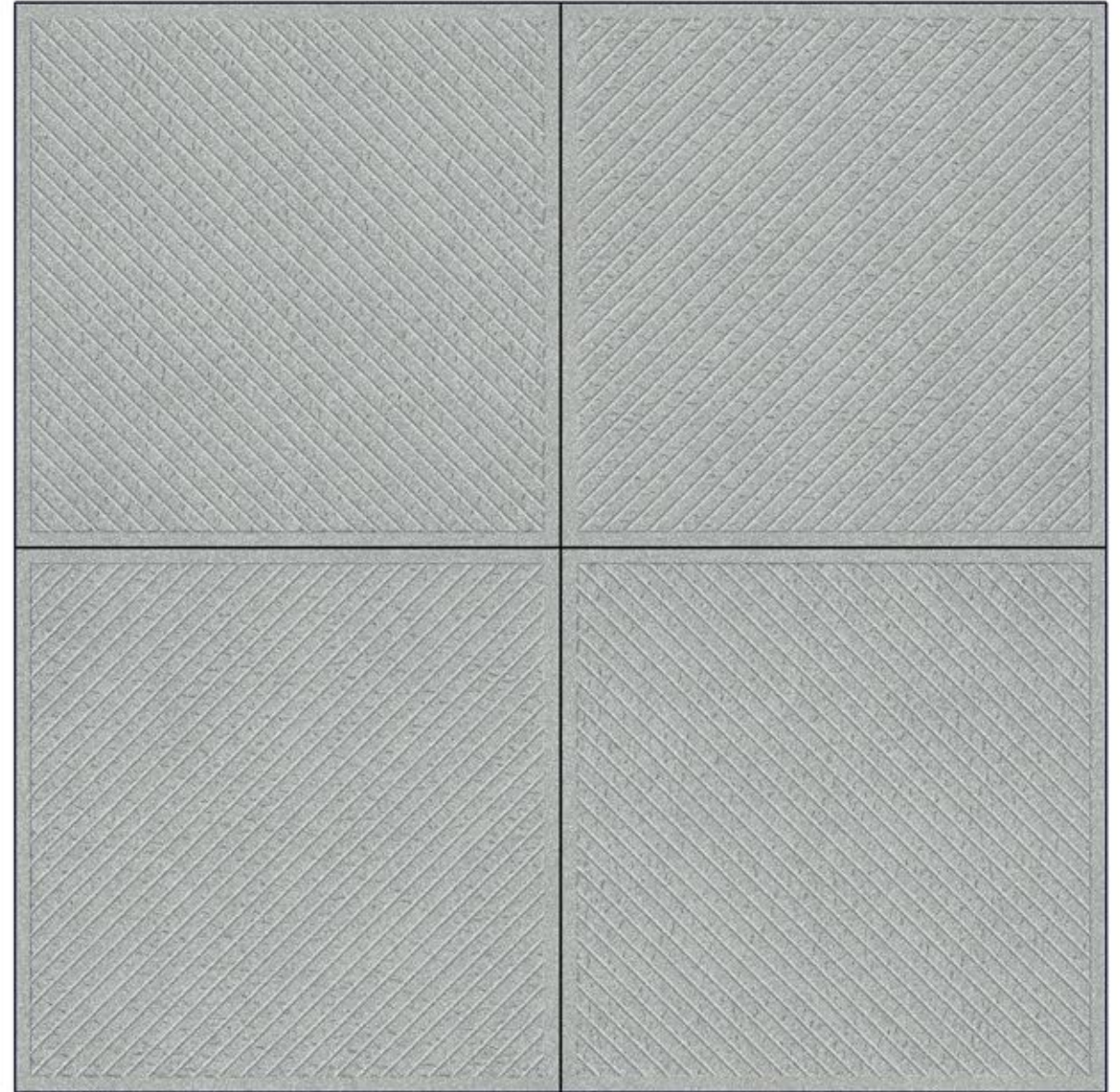
**PUNCH FINISH**



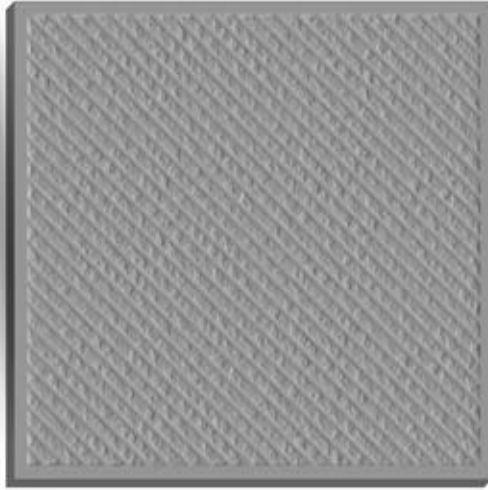
**P5 PUNCH**



**7205**



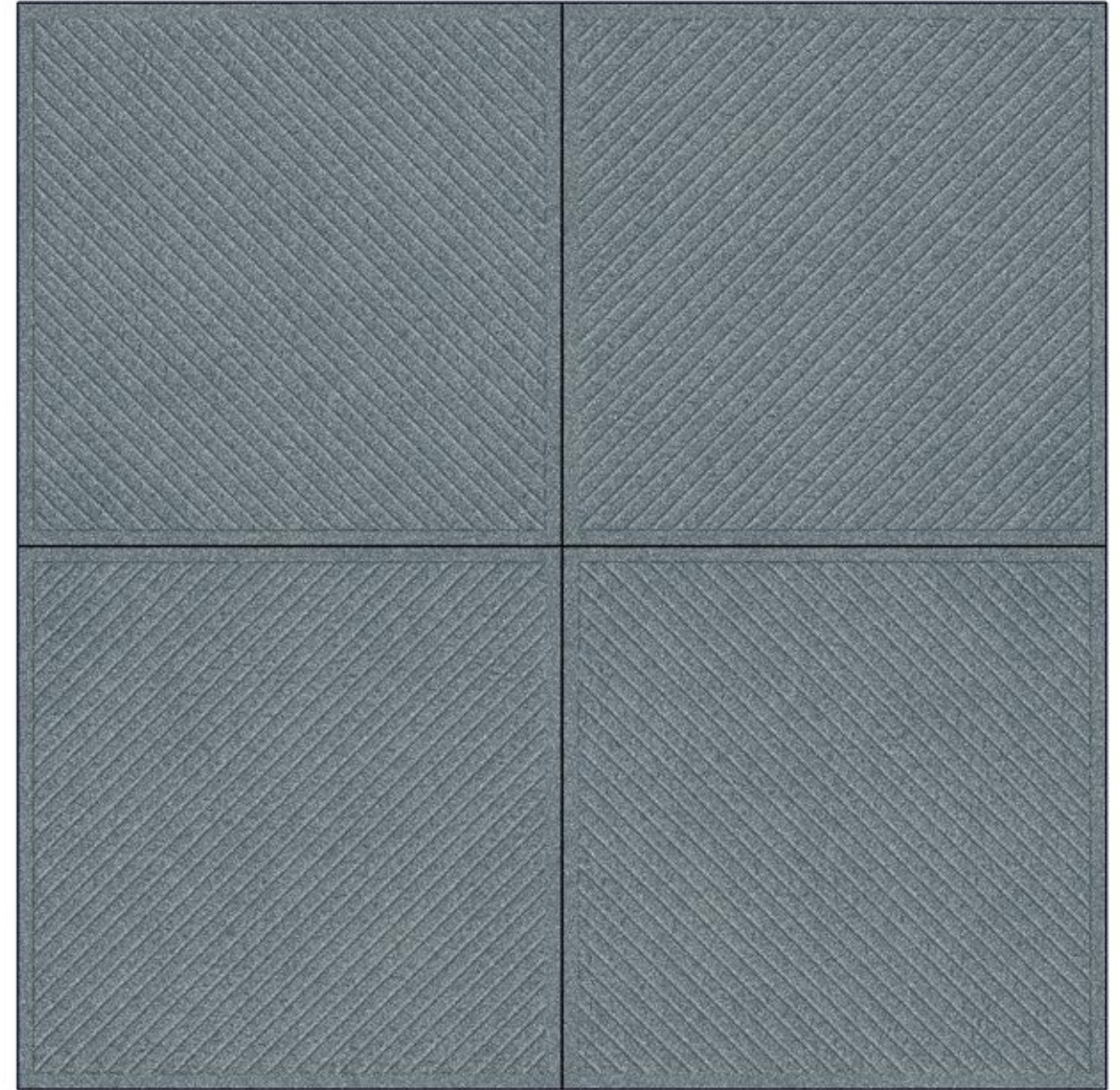
**PUNCH FINISH**



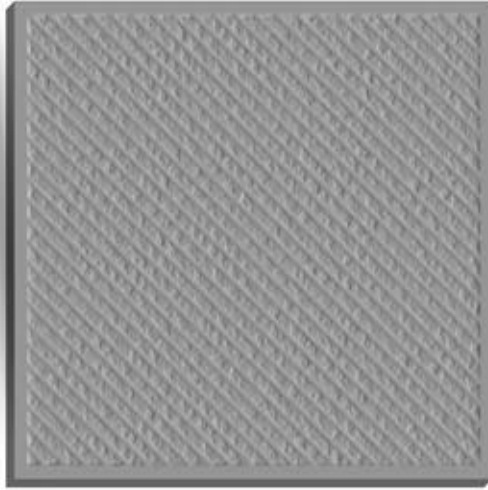
**P5 PUNCH**



**7207**



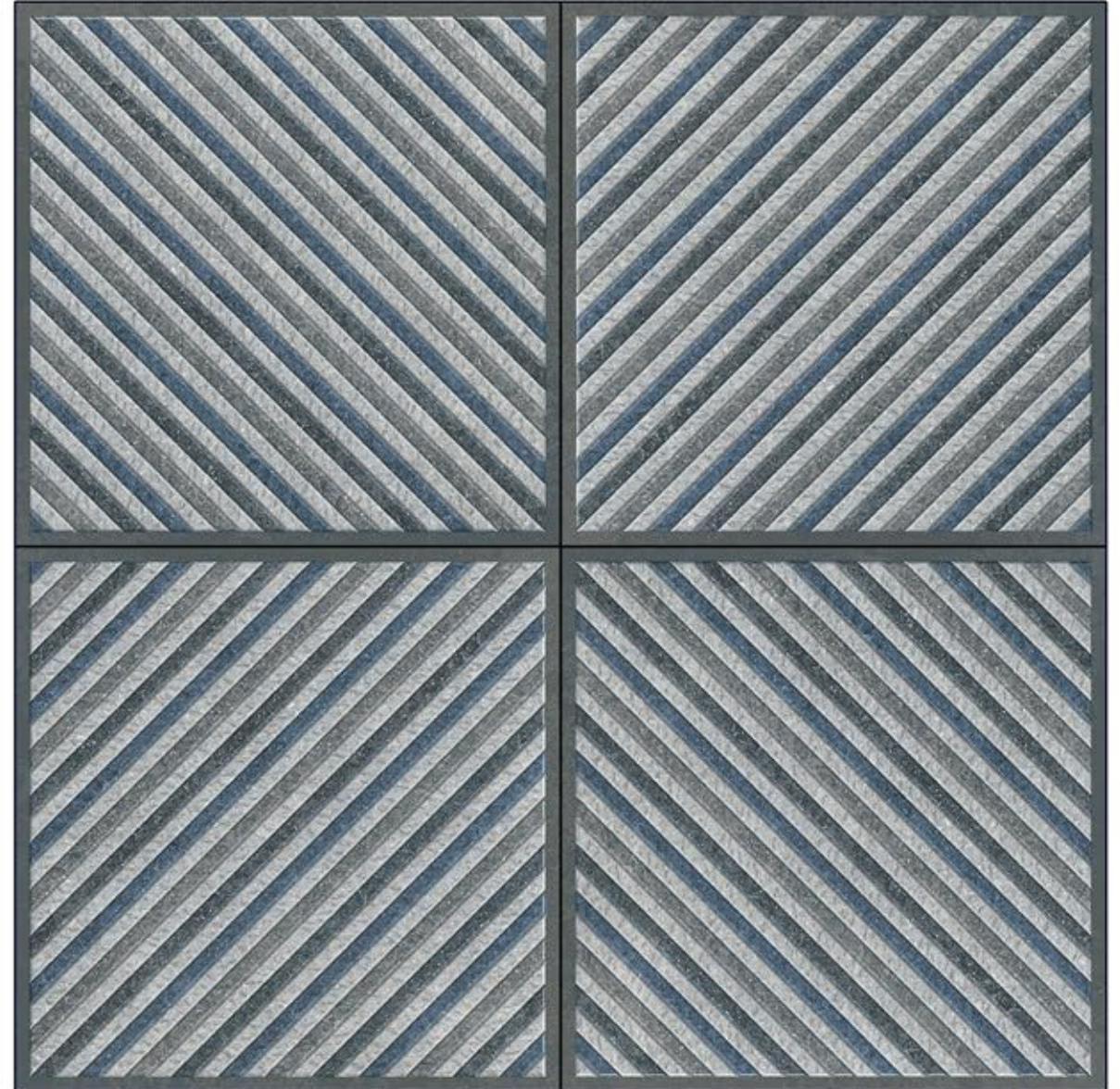
**PUNCH FINISH**



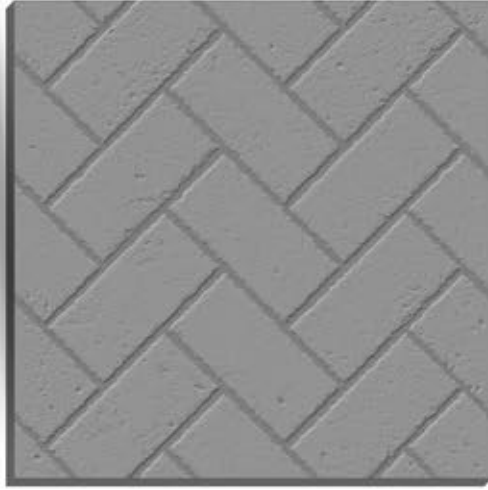
**P5 PUNCH**



**7210**



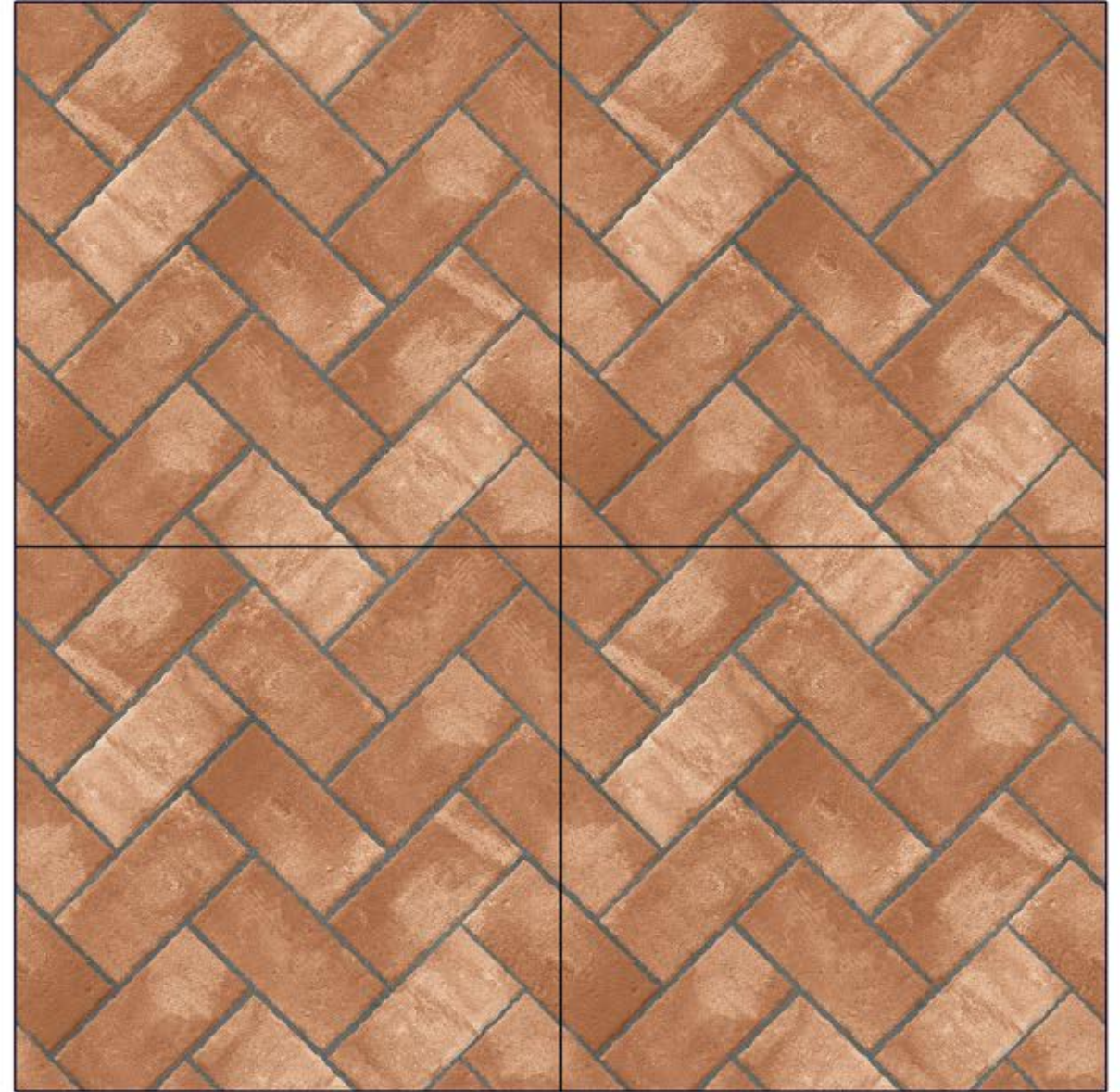
**PUNCH FINISH**



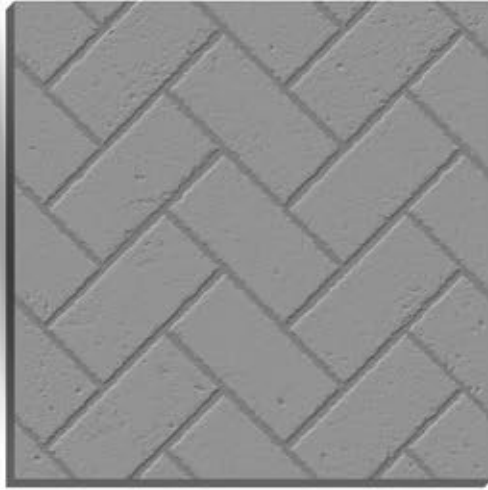
**P11 PUNCH**



**7351**



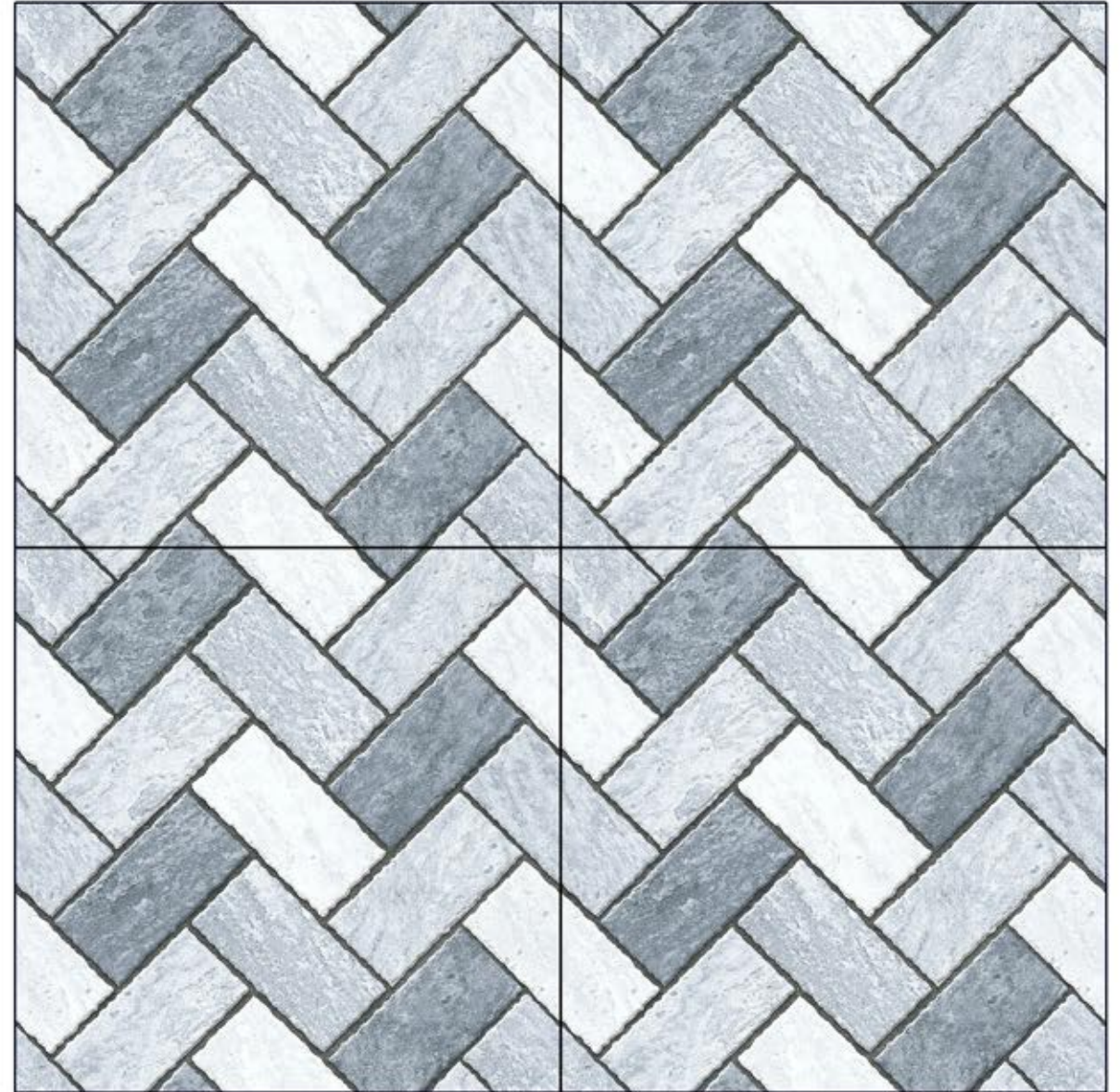
**PUNCH FINISH**



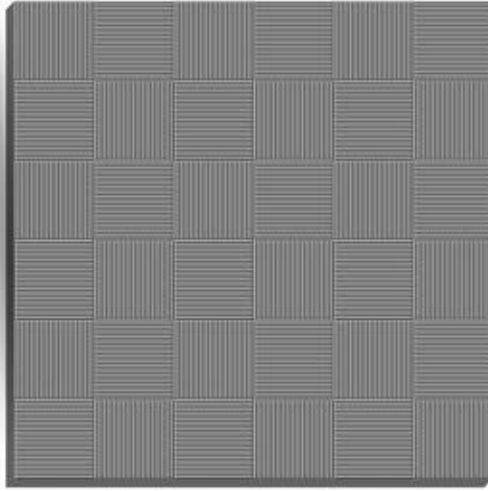
**P11 PUNCH**



**7353**



**PUNCH FINISH**



**P12 PUNCH**

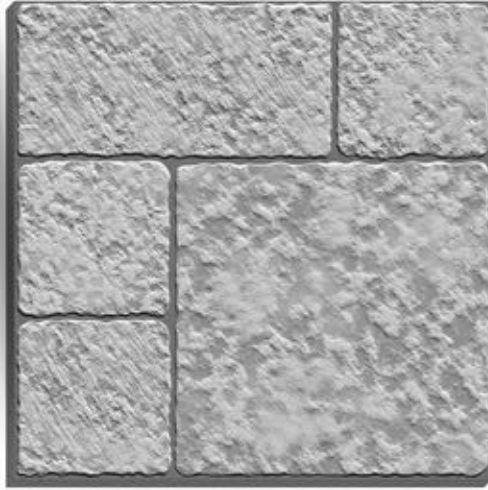


**7378**



**PUNCH FINISH**

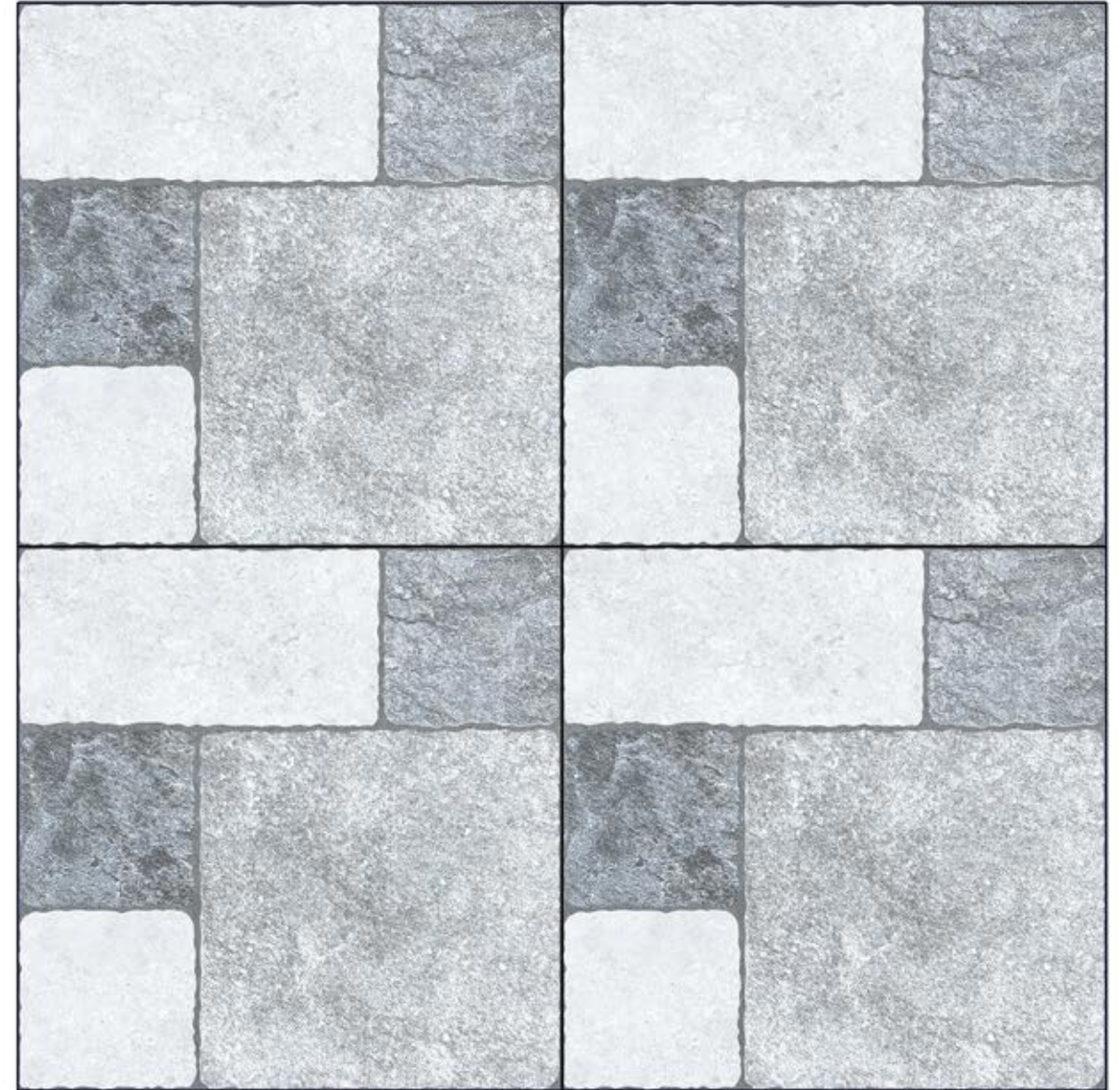




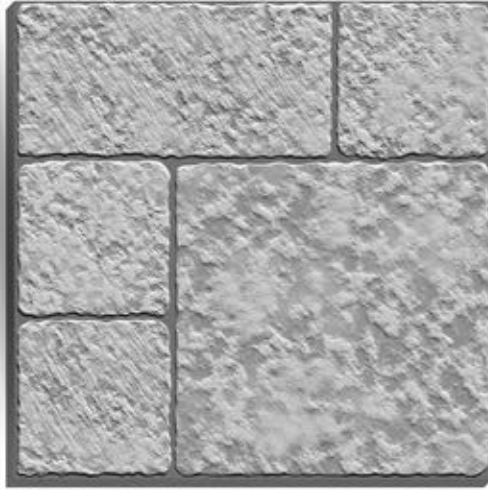
**P15 PUNCH**



**7451**



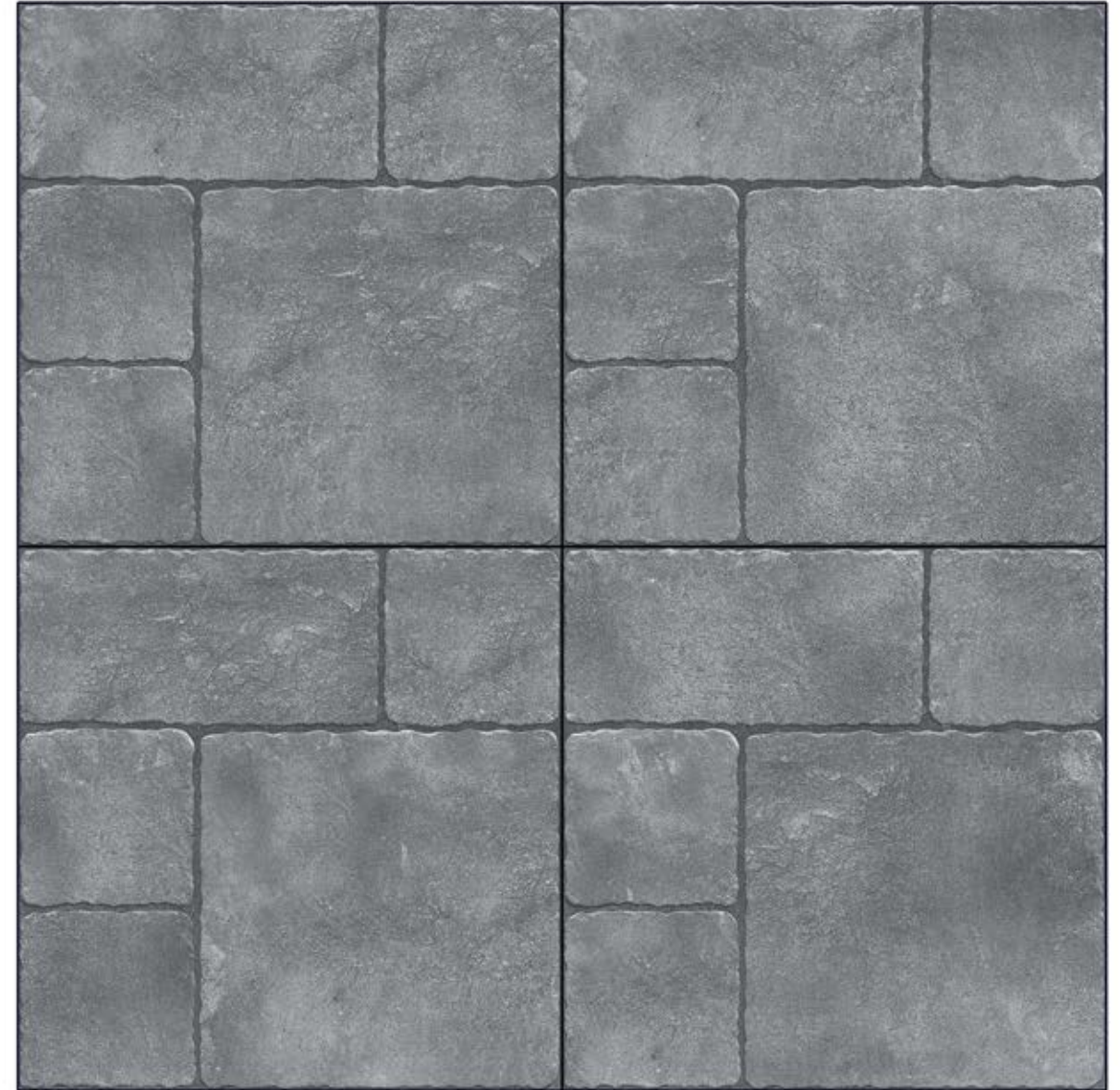
**PUNCH FINISH**



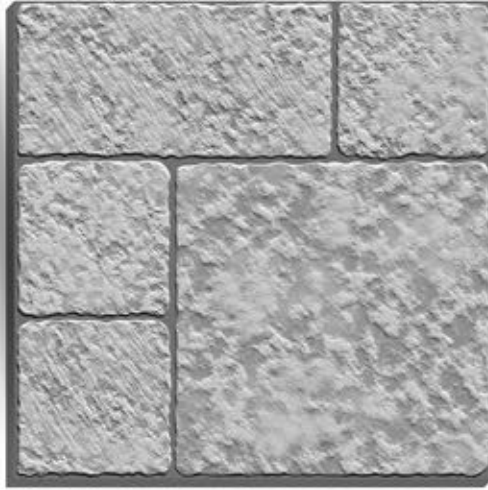
**P15 PUNCH**



**7455**



**PUNCH FINISH**



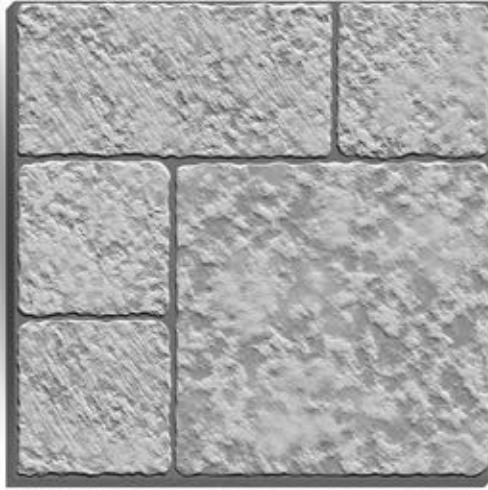
**P15 PUNCH**



**7456**



**PUNCH FINISH**



**P15 PUNCH**



**7457**



**PUNCH FINISH**

**400X400 MM | HEAVY DUTY VITRIFIED PARKING TILES | 12 MM THICKNESS**

**Technical Specification**

| S.No. | Property                       | Group Bla-ISO 13006 Annx.G.   | Our Value                     | Test According to |
|-------|--------------------------------|---|-------------------------------|-------------------|
| 1     | Deviation in length            | + 0.6%  | ± 0.1 %                       | ISO-10545-2       |
| 2     | Deviation in thickness         | ± 5%  | ± 4 %                         | ISO-10545-2       |
| 3     | Straightness of sides          | ± 0.5%  | ± 0.1 %                       | ISO-10545-2       |
| 4     | Rectangularity                 | ± 0.6%  | ± 0.1 %                       | ISO-10545-2       |
| 5     | Surface Flatness               | ± 0.5%  | ± 0.15%                       | ISO-10545-2       |
| 6     | Surface quality (%)            | A minimum of 95% of the tiles shall be would impair the appearance of a major area of tile. | 98% free from visible defects | ISO-10545-2       |
| 7     | Modulus of repture             | >35 N/mm <sup>3</sup>   | >40 N/mm <sup>3</sup>         | ISO-10545-4       |
| 8     | Breaking strength              | >1300 N   | >2000 N                       | ISO-10545-4       |
| 9     | Water absorption               | < 0.5%  | < 0.08%                       | ISO-10545-3       |
| 10    | Stain resistance               | Stain Proof   | Stain Proof                   | ISO-10545-14      |
| 11    | Chemical resistance            | No damage   | No damage                     | ISO-10545-13      |
| 12    | Thermal expansion              | < 9x10 <sup>-6</sup>  | < 6x10 <sup>-6</sup>          | ISO-10545-8       |
| 13    | Moisture expansion             | Nil   | Nil                           | ISO-10545-10      |
| 14    | Thermal shock resistance       | No damage   | No damage                     | ISO-10545-9       |
| 15    | Resistance to surface abrasion | manufacturer to state abrasion class  | PEI class 3-5                 | ISO-10545-7       |

**Packing Details**

| Size      | Thickness (Approx) | No. of Tiles Per Box | Area (Approx) | Weight (Approx) |
|-----------|--------------------|----------------------|---------------|-----------------|
| 400x400mm | 12mm               | 5 Pcs.               | 0.8 Sq.m/Box  | 20.0 Kg         |

